

Briefing of judges and competitors






Scoring System Conventional Ploughing.

Scoring System Conventional Ploughing.

1. Opening Split	10 points
2. Crown , <i>closeness, burying of trash, wheelmarks</i>	10 points
3. Crown , <i>height, uniformity, symmetrical, connection, seed bed</i>	10 points
4. Weed control , <i>No weeds, stubble or grass visible.</i>	10 points
5. Firmness of furrows , <i>Close and firm furrows, no holes</i>	10 points
6. Soil for seedbed , <i>Soil made available for future seedbed.</i>	10 points
7. Uniformity of furrow , <i>Uniform, conforming furrows, no visible pairing.</i>	10 points
8. Finish , <i>Neatness and weed control.</i>	10 points
9. Finish , <i>Narrowness and shallowness, transition, positioning, uniformity.</i>	10 points
10. Ins and Outs.	10 points
11. Straightness , <i>Opening Split, Crown, General Work, Finish.</i>	20 points
12. General Appearance.	10 points
Total	130 points
Total for the 2 judging teams: 130 x 2	260 points



Guideline for conventional ploughing

1. Opening Split (*Judged at plot*)

The ploughmen must perform an opening split before the ploughing starts.

2 furrow ploughs perform 1 full round and stop. 3 furrow ploughs perform 1 run only and stop.

- It is important that the opening split is tranquil and uniform throughout its full length, also in regard to the strip of soil ploughed up in the split. It is important that the outside edge of the split-furrows is in a line, parallel and uniform.

Otherwise it is up to the ploughmen how the split looks. The opening split may be:

Symmetrical / not symmetrical

+/- strip of soil in the bottom

Bottom different depth across.

- There should be no loose soil or plant material in the bottom of the split. It will also be considered a fault if plant material is visible between the bottom of the split and the turned furrow.

- The split must look natural and should not be mashed out due to excessive use of tailpiece.

- The Split should not be run on / rolled on by wheels from the tractor or plough. But tracks / small marks there are not clearly visible from the headland is not a fail.

- The split must be cut through in its full width and throughout its full length from scratch mark to scratch mark. It is ok if the cut-through has been done by the mould board scraping the soil away. The judge should, however, be very careful to control that all roots are cut or torn away.

Indicative deduction for non-cutting, which is deducted from the otherwise assessed the scoring.

Small spot

- 1 point

Large spot/first deep track

- 2 points

Several sprayer tracks

- 3 points

Several spots and also tracks

- 4-5 points

Maximum 10 points.



Guideline for conventional ploughing

Opening Split (*Judged at plot*)

Excellent: .
Okay: Not clean, general ok uniform
Bad: General tranquil.



Excellent: Clean in the bottom.
Okay: left side use of tailpiece, centre and left side uniform.
Bad: Right side castellated and not uniform and not a strait line.



Guideline for conventional ploughing

Opening Split (*Judged at plot*)

Excellent: Cut true.

Bad: Weed control, not uniform especially right side.



Excellent: Uniform and Tranquil.

Okay: Use of tailpieces.

Bad: loose soil in the bottom.

Note: Do not look at straightness



Guideline for conventional ploughing

Opening Split (*Judged at plot*)

Excellent: Uniform and Tranquil.
Okay:
Bad:
Note: Do not look at straightness



Excellent: .
Okay: Cut true, no loose soil.
Bad: Castellated furrows, weed control .



Guideline for conventional ploughing

2. Crown. (*Judged at plot*)

closeness, burying of trash, wheelmarks

Before doing the crown the ploughman is permitted to do one extra run to modifies the split for the crown. During that run the tractor wheel must not touch any part of the split rippings (right tractor wheel had to drive in the bottom of the split. The ploughman decide himself how many visible furrows the crown will show:

2 furrow ploughs: 15 or 16 visible furrows in the crown.

3 furrow ploughs: 16 visible furrows in the crown.

- All land must be cut through and the first furrow slices must be closed firmly together without holes or hollows. A V-line in the centre is permitted but only if it firmly closed and stubble and trash well covered. The judges must control that the middle of the crown is stable and not just a thin layer of soil you can step through.

- For the hole crown (15-16 furrows):

All plant materiel must be ploughed down (weed control) and there must be a good firmness with no holes.

A sufficient layer of soil must be available for a good seed bed.

- Point must be deducted if tractor wheel marks appear in the crown. The first 2 meters in each end of the plot must **not** be evaluated – will be done under “Ins and Outs”

If there is tractor wheelmarks, It mush reduce the score **like** following:

Small mark	½ - 1 point
Repeated marks	1-2 points
Marks in the whole length	2-4 points

Maximum 10 points.



Guideline for conventional ploughing

2. Crown. (*Judged at plot*)

closeness, burying of trash, wheelmarks

Excellent: Weed control, seedbed, closed, no wheelmarks.

Okay: .

Bad: .



Excellent: Weed control, seedbed, closed, no wheelmarks.

Okay: Maybe one or two holes depended how it is to walk on.

Bad: .



Guideline for conventional ploughing

2. Crown. (*Judged at plot*)

closeness, burying of trash, wheelmarks

Excellent: No wheelmarks.
Okay from the other end: Weed control, no holes, seed bed.
Bad from this end: Weed control, holes in the crown, seedbed (right first furrow thin).



Excellent: No wheelmarks.
Okay: maybe ok seedbed.
Bad: holes in the crown, partly bad weed control.



Guideline for conventional ploughing

2. Crown. (*Judged at plot*)

closeness, burying of trash, wheelmarks

Okay: The connecting furrows look to the crown look ok.

Bad: Partly holes in the crown with bad weed control.



Excellent: Weed control and seedbed.

Okay: few holes in the crown.

Bad: .



Guideline for conventional ploughing

3. Crown. (*Judged from headland*)

(height, uniformity, symmetrical, connection, seed bed)

- All furrow slices in the crown (15-16 furrows) must be uniform throughout the full length and all the furrows must have the same shape, width, conform and symmetrical with each other.
- The crown must appear to be of the same height as the furrows in the rest of the ploughed field.
- Excessive use of tailpieces will often disturb the conformity of the crown and often reduce the score.
- The first 2 meters in each end of the plot must **not** be evaluated – will be done under “Ins and Outs”
- Do not look after wheel marks and straightness.

Maximum 10 points.



Guideline for conventional ploughing

3. Crown. (*Judged from headland*)

(height, uniformity, symmetrical, connection, seed bed)

Excellent: Perfect height, almost perfect uniform and conform (second furrow to the left is a little low / small).



Excellent: Height is super.
Okay: Not conform and not symmetrical, (first furrow to left is small) (mainly because of use of tailpieces).



Guideline for conventional ploughing

3. Crown. (*Judged from headland*)

(height, uniformity, symmetrical, connection, seed bed)

Excellent: Symmetrical, close to be a perfect uniform and conform but the first furrows in the crown is maybe a little bit bigger.
Height is nearly ok – maybe a little height.



Bad conform, not same shape and size of the furrows in the crown.
A little height.



Guideline for conventional ploughing

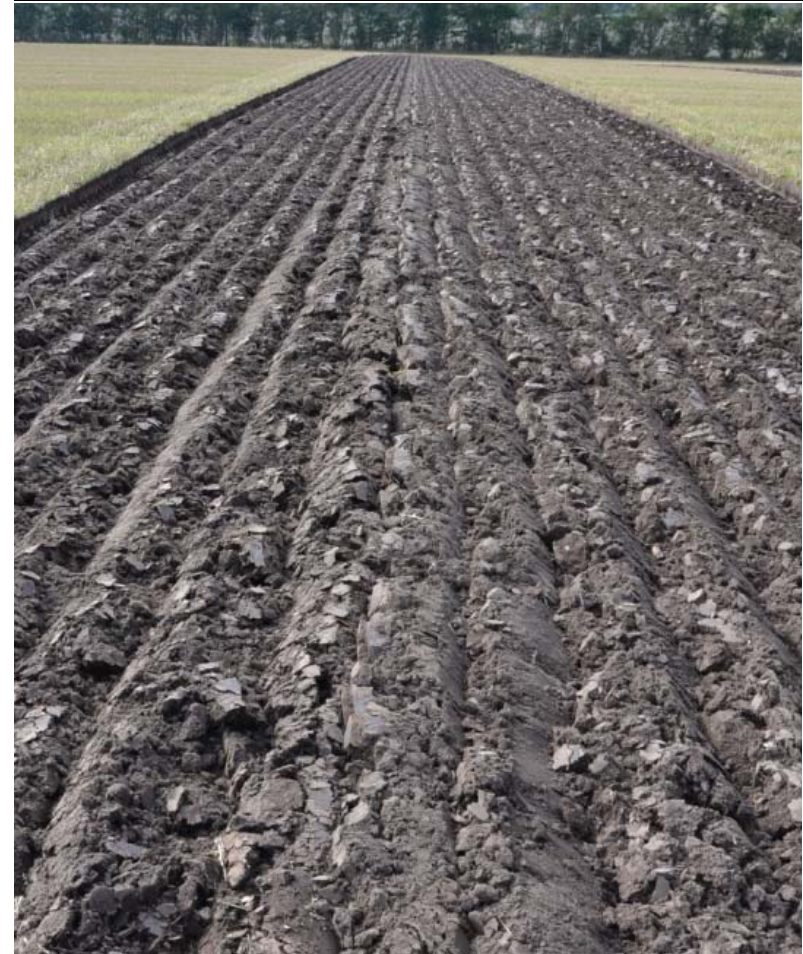
3. Crown. (*Judged from headland*)

(height, uniformity, symmetrical, connection, seed bed)

The symmetrical is great.
A little to height, but the big mistake
is the two big crown furrows not
uniform with the rest of the crown
furrows.



The height is fine.
Small mistake in the uniformity and
symmetrical (third furrow to the left).
Same shape (no mark from tailpieces)



Guideline for conventional ploughing

4. Weed Control (*Judged at plot*)

No weeds, stubble or grass visible.

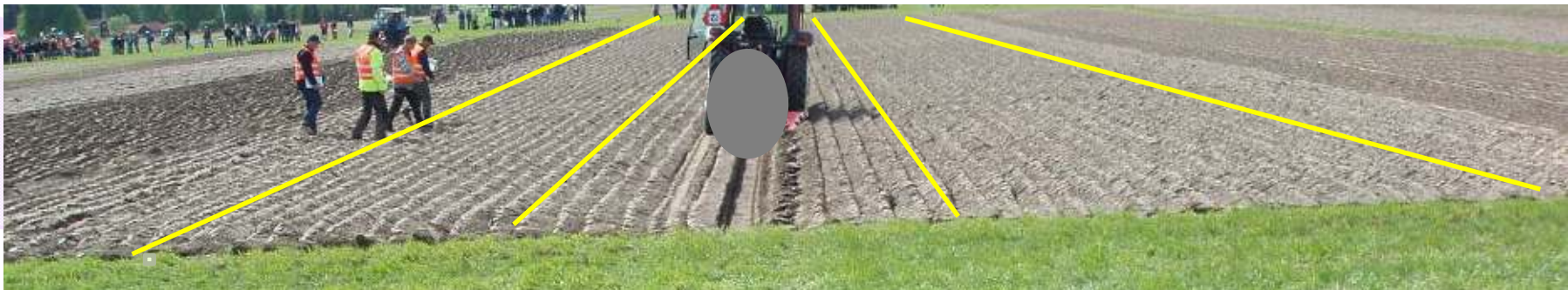
Skimmers must be used.

*Evaluated in “general work” only. **Not** in the 15/16 crown furrows and **not** in the 12 finish furrows.*

*The first 2 meters in each end of the plot must **not** be evaluated - will be done under “Ins and Outs”
Skimmers must be used.*

- All plant material must be completely ploughed down.
- All roots must be torn or cut through.
- Loose stubble, grass or straw falling or blown up on top of the furrow slices is not so serious a fault as plant material with roots not ploughed down. It is a fault, though, and must result in point deduction.

Maximum 10 points.



Guideline for conventional ploughing

4. Weed Control (*Judged at plot*)

No weeds, stubble or grass visible. Skimmers must be used.

The first 2 meter will be judge in the
“ins and outs”
So here is the main part of the problem
an “ins and outs” problem



Guideline for conventional ploughing

4. Weed Control (*Judged at plot*)

No weeds, stubble or grass visible. Skimmers must be used.

2 examples of excellent
weed control



Guideline for conventional ploughing

4. Weed Control (*Judged at plot*)

No weeds, stubble or grass visible. Skimmers must be used.

Skimmers can have been used correct here, but because of sticky conditions there is a lot of trash at the surface. Les mistake compare with where the root is not cut like



Skimmers have not been used here and grass is visible between the furrows. This is a big mistake.



Guideline for conventional ploughing

4. Weed Control (*Judged at plot*)

No weeds, stubble or grass visible. Skimmers must be used.

Bad weed control at stubble field with
a lot of trash at the surface.



Guideline for conventional ploughing

5. Firmness of furrows (*Judged at plot*)

Close and firm furrows, no holes.

*Evaluated in “general work” only. **Not** in the 15/16 crown furrows, **not** in the 12 finish furrows and **not** the first 2 runs against the neighbor.*

*The first 2 meters in each end of the plot must **not** be evaluated - will be done under “Ins and Outs”*

- The furrows must be well turned and lie firm and close against each other with no holes in between.
 - Each furrow must lie constant and tranquil with no holes and cracks.
 - Furrows must be packed as good as possible and be firm to walk on.
 - Tractor wheel marks anywhere on the ploughed land must result in point deduction.
- Maximum 10 points.

*It must be controlled that the ploughman has not been driving on the neighbouring plot and that his first furrows against the neighbouring plot are ploughed through. **In case of faults the judges must inform the Head Stewards.***



Guideline for conventional ploughing

5. Firmness of furrows (*Judged at plot*)

Close and firm furrows, no holes.

Note: We can't feel the furrow packing by looking at the picture and this is a big part of this judging.

A well packed soil, no holes between the furrows but there is few holes in the furrow slides.



Excellent turned furrows with no holes or cracks.

Had to walk at the furrows to decide how well packed it is.



Guideline for conventional ploughing

5. Firmness of furrows (*Judged at plot*)

Close and firm furrows, no holes.

Note: We can't feel the furrow packing by looking at the picture and this is a big part of this judging.

At this sandy stubble soil there will newer be any holes, so therefore the judging will be at the packing and firmness.



Guideline for conventional ploughing

5. Firmness of furrows (*Judged at plot*)

Close and firm furrows, no holes.

Note: We can't feel the furrow packing by looking at the picture and this is a big part of this judging.

This plot have to many cracks and holes.
It is not very tranquil.
Because of that the firmness is probably
soft – but had to be walked on to decide.



Okay turned furrows with very few holes
between the furrows.
Some cracks in the furrow slides.
Tranquil could be better.



Guideline for conventional ploughing

6. Soil for seedbed (*Judged at plot*)

Soil made available for future seedbed.

*Evaluated in “general work” only. **Not** in the 15/16 crown furrows, **not** in the 12 finish furrows and **not** the first 2 runs against the neighbor.*

*The first 2 meters in each end of the plot must **not** be evaluated - will be done under “Ins and Outs”*

- The furrow slices must not stand on edge but should be well turned, leaving plenty of soil available for the future cultivation.
 - The furrows can also be to flat, because the cultivator can lift up the thin furrow slides.
 - You must be able to prepare the following seed bed with a harrow without lifting plant material upon the surface.
- Maximum 10 points.



Guideline for conventional ploughing

6. Soil for seedbed (*Judged at plot*)

Soil made available for future seedbed.

Okay soil for seedbed, can be better if the soil is turned a little more around.



Excellent soil for seedbed, plenty of soil for cultivator and no risk to pull up grass.



Guideline for conventional ploughing

6. Soil for seedbed (*Judged at plot*)

Soil made available for future seedbed.

At this light type stubble soil, there is plenty of soil for seedbed. The main part of the ploughmen will make a good soil available for seedbed here, but if the soil is firm and well packed the cultivation will be better.



Guideline for conventional ploughing

6. Soil for seedbed (*Judged at plot*)

Soil made available for future seedbed.

Not a well turned furrows and therefore not a good soil for seedbed. The lumpy furrows is not easy to cultivate and will have a risk of rolling up Grass/ stubble.



Okay soil for seedbed, can be better if the furrows is turned more around. The lumpy furrows is not easy to cultivate and will have a risk of rolling up Grass/ stubble.



Guideline for conventional ploughing

7. Uniformity of furrows. (*Judged from headland*)

Uniform, conforming furrows, no visible pairing.

*Evaluated in “general work” only. **Not** in the 15/16 crown furrows, **not** in the 12 finish furrows and **not** the first 2 runs against the neighbor.*

- The furrows must be of equal height/depth and equal width throughout the full length and full width of the plot.
 - All furrows in the plot should be uniform and conform with each other.
 - No repeating faults for each run, no pairing.
- Maximum 10 points.



Guideline for conventional ploughing

7. Uniformity of furrows. (*Judged from headland*)

Uniform, conforming furrows, no visible pairing.

At this plot the width of the furrows varies a little, otherwise a okay uniformity.



A lot of pairing at this plot therefore a low score here.



Guideline for conventional ploughing

7. Uniformity of furrows. (*Judged from headland*)

Uniform, conforming furrows, no visible pairing.

Here is a little pairing and there is also some bigger/ difference furrows one or two places



To early to judge this plot – nut so fair an excellent uniformity



Guideline for conventional ploughing

7. Uniformity of furrows. (*Judged from headland*)

Uniform, conforming furrows, no visible pairing.

Small pairing visible, but a bigger problem is this end, where there is uneven furrows sizes (small – wide)



This plot can be judges now – because the ploughman do only need the finish A Excellent Uniformity and conformity



Guideline for conventional ploughing

8. Finish - Neatness and weed control. (Judged at plot)

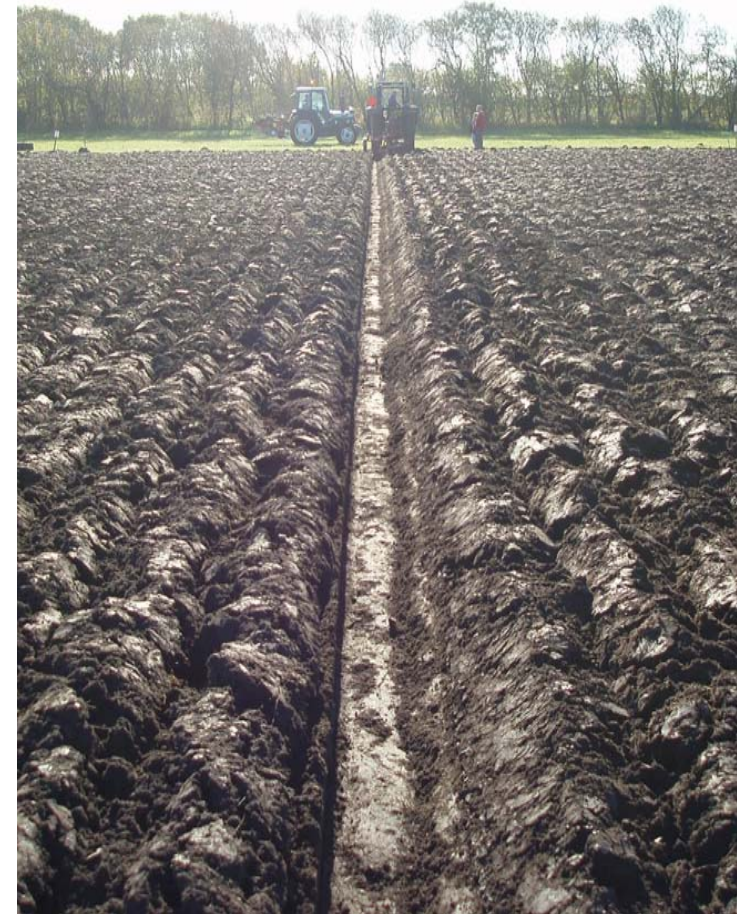
The Finish consists of the last 12 furrows. 6 on each side of the final furrow bottom.

- No loose soil or plant material in the finishing furrow bottom.
- Weed control, firmness and soil for seedbed in the last runs - all plant material must be completely buried.
- The furrows had to be firm with no holes, resulting in a good seed bed.
- Only one tractor wheel mark in the ploughed land. (Small marks from the tractor front wheel, not visible from the headland, should **not** be considered a fault.) and plough wheel mark should be within the tractor wheelmark.

*If there is wheelmark mistake in the finish, **the judges must inform the Head Stewards and still judge the finish as there is no mistake (Head Steward will penalize).***

Maximum 10 points.

*Control that the finishing furrow is ploughed towards the ploughman's own crown. If not, **the judges must inform the Head Stewards, but still judge the finish as normal.***



Maximum 10 points.

Guideline for conventional ploughing

8. Finish - Neatness and weed control. (*Judged at plot*)

Almost clean furrow - but not 100%
Grass visible in left bottom corner at the picture.
Flat shallow furrow gives a bad seedbed



Excellent clean furrow.
Excellent weed and seedbed control
A single wheel mark.
A topscore for stubble



Guideline for conventional ploughing

8. Finish - Neatness and weed control. (*Judged at plot*)

Some clods in the bottom of the finally furrow. Grass visible in the second last run (maybe belongs to Ins and Out)
Bad seedbed control – with holes in the last furrow



Excellent seedbed control and weed control.
A little bit clods in the finally furrow.
A single wheel mark – perfect
In the top for Neatness and weed control



Guideline for conventional ploughing

8. Finish - Neatness and weed control. (*Judged at plot*)

Few clods in the final furrow.
Left side a okay Seedbed control – right side maybe some holes



Few clods in the finally furrow Excellent weed control and Seedbed, single wheel mark.
The neatness and weed control score in the top.



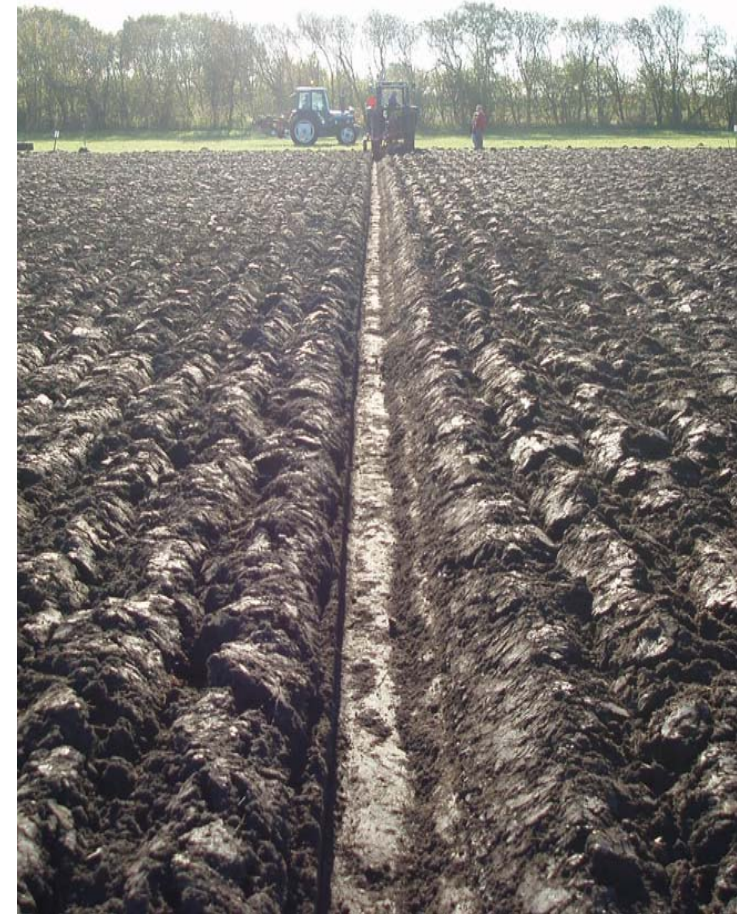
Guideline for conventional ploughing

9. Finish – Uniform, narrow and shallow. (*Judged from headland*)

Narrowness and shallowness, transition, positioning, uniformity.

The Finish consists of the last 12 furrows. 6 on each side of the final furrow bottom.

- The furrow bottom in the finish should be as narrow as possible and should not be any deeper than the normal ploughing.
- If the last furrow is “mashed” too far out or up by the mouldboards the finish will appear too wide.
- It is most optimal if the shallow furrow and the last “soil” furrow is in the same height as the rest, with an smooth and a good transition between the finishing furrows and the furrows in the general work.
- Positioning of the final furrow - No “step” and no “over ploughing”.
- “Step”: It must be controlled that nothing is left of the bottom of the second last run. In grassland and in heavy clay stubble there will always be an edge left under the soil from the second last turned furrow, but if it cannot be seen from the headland, seen in line of the finish the position is correct.
- “Over ploughing”: can be controlled by the furrow slice from the second last run has its full width and has a natural shape in connection with the finishing furrow bottom.
- The tractor wheel mark had to be in a natural level with the ploughing and not a deep track, and it had to be positioned parallel to the furrows.



Maximum 10 points.

Guideline for conventional ploughing

9. Finish – Uniform, narrow and shallow. (*Judged from headland*)

Narrowness and shallowness, transition,

Not a full and nice rounded shallow furrow left it is over ploughed. Bad transition to the left with difference shape of furrows. Wheel mark not parallel with the furrows but the wheelmark height is fine. The width of the finally furrow is fine.



A excellent Uniform, narrow and shallow finish.

The tractor wheel mark is a little to deep.



Guideline for conventional ploughing

9. **Finish – Uniform, narrow and shallow. (*Judged from headland*)**
Narrowness and shallowness, transition,

Seriously over ploughed, only a little part of the shallow furrow left. Excellent height of the furrows to the right with a good uniformity. To the left the uniformity is okay but a little to deep wheel mark and not parallel. Depth and width is okay/ fine.



A excellent finish



Guideline for conventional ploughing

9. **Finish – Uniform, narrow and shallow. (*Judged from headland*)**
Narrowness and shallowness, transition, positioning, uniformity.

From this end is there a step in the finish, and that results in a wider furrow. A okay conformity and transition but not perfect. Wheel mark parallel but this end a little to deep.



Remember do not look at straightness here
A mistake in the second last run to the left – except from that a fine conformity with nice transition.
Too deep wheelmark and a little too wide finish furrow



Guideline for conventional ploughing

9. Finish – Uniform, narrow and shallow. (*Judged from headland*)
Narrowness and shallowness, transition, positioning, uniformity.

Excellent finish

A good example of how the soil furrow sometimes will look difference, and for this day it is probably the same for all ploughmen, especially in grassland ploughing.

Maybe the finish furrow is a little wide and the soil furrow could have been just a little higher.



Guideline for conventional ploughing

10. Ins and Outs.

(Judged from headland)

The first and last 2 meters of the ploughed land is evaluated as part of this discipline.

- The very most important is that all land within the scratch mark has been cut through and is well turned. It is a must bigger mistake to have some unploughed land inside the scratch mark compare with ploughing in the headland.
 - High priority had to be given to regularity in the way the plough has been positioned into the soil and lifted off again when ploughing all the furrows, in the crown, in the general work, and in the finish.
 - The furrows should be well turned - all the way to the scratch mark and in the same style as in the rest of the ploughing.
 - No visible tractor wheel marks within 2 meters from the scratch mark line and no rolling of the headland with the tractor wheels.
- Maximum 10 points.



Guideline for conventional ploughing

10. Ins and Outs.

(Judged from headland)

Inside the scratch mark is this plot excellent, with high score, but outside it is a mess with loss of many point.



This ploughman understand to have the same design and length off the furrow slices whatever it is “in the ground” (right side) or “off the ground” (left side). It is perfect regularly and good seedbed and weed control at the first 2 meters.



Guideline for conventional ploughing

10. Ins and Outs.

(Judged from headland)

A okay regularly ends (same way every time).
But every second furrows very thin with a bad seedbed and bad uniformity as result.
Weed control is okay.



© Ken Chappell

Very irregularly ins and outs. Low score for this



Guideline for conventional ploughing

10. Ins and Outs.

(Judged from headland)

Very good
regularly ends.
But not a good
weed control in
the first 2
meters.



Guideline for conventional ploughing

10. Ins and Outs.

(Judged from headland)

Okay to good (but not perfect) regularity and uniformity of this ends.
Excellent weed and seedbed control both in and out.



Okay regularity with some problems with weed control.
Okay seedbed.



Guideline for conventional ploughing

11. Straightness. (*Judged from headland*)

The straightness had to be judged in full length (also the 2m ins and outs).

11a. Straightness in the Opening Split.

Maximum 10 points.

11b. Straightness in Crown.

evaluation should be done on the top off the furrow slices and not on the edge of the furrow!

All the Crown furrows (15 or 16 furrows) had to be evaluated but with a excessive weight put on the centre furrows of the crown.

Maximum 10 points.

11c. Straightness in General Work.

evaluation should be done on the top off the furrow slices and not on the edge of the furrow!

Note: Do not judge the Crown-area and the Finishing-area.

Note: Do not judge the first 2 runs against the neighbour ploughman - it is for straighten up.

Maximum 10 points.

11d. Straightness in Finish.

The last 6 + 6 furrows, but with excessive weight on the finishing furrow.

Maximum 10 points.

Average of the 4 evaluations x 2. Maximum 20 points.



Guideline for conventional ploughing

11. Straightness. (*Judged from headland*)

The straightness had to be judged in full length (also the 2m ins and outs).

11a. Straightness in the Opening Split.
Maximum 10 points.



Guideline for conventional ploughing

11. Straightness. (*Judged from headland*)

The straightness had to be judged in full length (also the 2m ins and outs).

11b. Straightness in Crown.
evaluation should be done on the top off the furrow slices and not on the edge of the furrow!

All the Crown furrows (15 or 16 furrows).

Inside the yellow line.
had to be evaluated but with a excessive weight put on the centre furrows of the crown.

Maximum 10 points.



Guideline for conventional ploughing

11. Straightness.

(Judged from headland)

The straightness had to be judged in full length (also the 2m ins and outs).

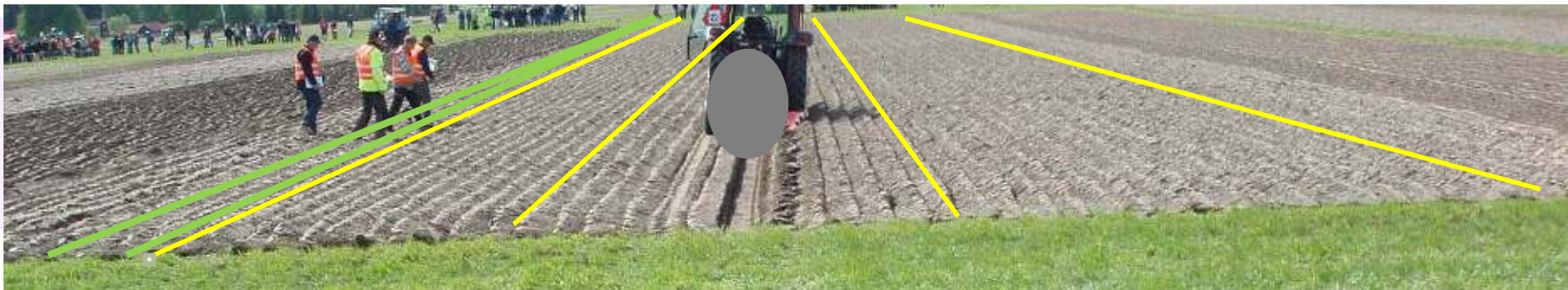
11c. Straightness in General Work.

evaluation should be done on the top off the furrow slices and not on the edge of the furrow!

Note: Do not judge the Crown-area and the Finishing-area. Only between the yellow lines

Note: Do not judge the first 2 runs against the neighbour ploughman (green lines) – it is for straighten up.

Maximum 10 points.



Guideline for conventional ploughing

11. Straightness.

(Judged from headland)

The straightness had to be judged in full length (also the 2m ins and outs).

11d. Straightness in Finish.

The last 6 + 6 furrows, but with excessive weight on the finishing furrow.

Maximum 10 points.



Guideline for conventional ploughing

12. General Appearance. (*Judged from headland*)

The ploughman must have finished his plot completely.

The skill of the ploughman is evaluated by judging at all visible aspects as observed from headland.

Here is it important to look at all aspects from crown to finish.

- Important: Same style off ploughing, with uniform and conform furrow slices, at the hole ploughman's plot with no mistakes.

Control of all aspects like: Crown, weed control, uniformity of furrows, straightness, finish, ins and outs.

Maximum 10 points.



Guideline for conventional ploughing

12. General Appearance. (*Judged from headland*)

The ploughman must have finished his plot completely.

At the picture it look like this ploughman have made a excellent job – with very limit of mistakes.



Guideline for conventional ploughing

12. General Appearance. (*Judged from headland*)

The ploughman must have finished his plot completely.

At this plot, there is several mistakes like: Pairing, mistake in the uniformity around the crown and as well in the finish. The finish is not good and a average ins and outs. A okay straitens (not perfect). A low score for this.



Guideline for conventional ploughing

12. General Appearance. (*Judged from headland*)

The ploughman must have finished his plot completely.

This plot look okay general but it look like there is major mistakes around the crown.
Good weed control.
A little curved furrows in the other end.



Guideline for conventional ploughing

12. General Appearance. (*Judged from headland*)

The ploughman must have finished his plot completely.


From this pictures it look like this ploughman have made a good job with only small mistakes. Maybe the conformity and uniformity around the finish could have been a little better.





Guideline for Reversible ploughing

Scoring System Reversible Ploughing.



1. Opening Furrow	10 points
2. Crown/ start Furrows	10 points
3a. The Butts <i>Completeness of cut through, no dips or mounds</i>	10 points
3b. Connecting furrow at Butts <i>Full furrow the full length. Equal height, uniform</i>	10 points
4. Weed control , <i>No weeds, stubble or grass visible.</i>	10 points
5. Firmness of furrows , <i>Close and firm furrows, no holes</i>	10 points
6. Soil for seedbed , <i>Soil made available for future seedbed.</i>	10 points
7. Uniformity of furrow , <i>Uniform, conforming furrows, no visible pairing.</i>	10 points
8. Finish furrows. <i>Uniformity and conformity, weed control</i>	10 points
9. Final Furrow. <i>Position, neatness, narrowness, shallowness and height</i>	10 points
10. Ins and Outs.	10 points
11. Straightness: <i>Opening Furrow, Throwback, General Work, Finish</i>	20 points
12. General Appearance	10 points
Total	140 points
Total for the 2 judging teams: 140 x 2	280 points

Guideline for reversible ploughing

1. Opening Furrow. (*Judged at plot*)

*The ploughman must perform an opening furrow before the ploughing starts. The opening must be done with the **rear/ right** plough body.*

- It is important that the opening furrow is tranquil and uniform throughout its full length also in regard to the volume of soil ploughed up. The shape of the opening furrow is at the discretion of the competitor.
- There should be no loose soil or plant material in the bottom of the opening furrow. It will also be considered a fault if plant material is visible between the bottom of the furrow and the turned furrow.
- The opening furrow must look natural and should not be mashed out due to excessive use of tailpiece or driven on with tractor wheel or plough wheel.
- The bottom of the opening furrow must be cut through in its full width and throughout its full length from scratch mark to scratch mark. It is ok if the cut-through has been done by the mouldboard scraping the soil away. The judge should, however, be very careful to control that all roots are cut or torn away.

Indicative deduction for non-cutting, which is deducted from the otherwise assessed the scoring

- | | |
|-------------------------------|--------------|
| Small spot | - 1 point |
| Large spot/first deep track | - 2 points |
| Several sprayer tracks | - 3 points |
| Several spots and also tracks | - 4-5 points |

Maximum 10 points.



Guideline for reversible ploughing

1. Opening Furrow. (*Judged at plot*)

A very nice stubble opening furrow. Maybe there is a little bit soil / stubble in the bottom and right side of the mould furrow can be a little bit more Uniform, but still a height score for this



A very nice grass opening furrow. Excellent clean. Very uniform and tranquil true the hole length.



Guideline for reversible ploughing

1. Opening Furrow. (*Judged at plot*)

Excellent grass opening furrow
Very uniform and nice tranquil true
the whole length.



Bad opening furrow.
Grass visible between the bottom and
the furrow slices.
Bad uniform and tranquil of the furrow
true the hole length (gab with no
mould)
Not nice cut to the left.
Not cut true.



Guideline for reversible ploughing

1. Opening Furrow. (*Judged at plot*)

Remember do NOT pay attention to straightness in this aspect
A okay opening furrow but with few clouds in the bottom and pressed a little to flat by use off tailpieces.
Few clouds to the left make the furrow a little les uniform.



Remember do NOT pay attention to straightness in this aspect
Right side a little castellated and not tranquil.
Okay uniform from this end to the other end.



Guideline for reversible ploughing

2. Crown / Start Furrows.

(Judged at plot)

The throwback must be performed with the plough turned to the left.

- All land must be cut through and the first furrow slice must be turned down into the bottom of the opening furrow so that the edge of the first furrow slice is in flush with the edge of the opening furrow.
- The height and width of the first furrow should be equal to the other furrows.
- The transition from first furrow to the rest of the ploughed must be smooth with conforming furrows in all 4 runs.
- All plant material must be ploughed down. Evaluate all 4 runs.
- Points must be deducted if tractor wheel marks appear in the 4 runs.

The first 2 meters in each end of the plot must **not** be evaluated – will be done under “Ins and Outs”

Maximum 10 points.



Guideline for reversible ploughing

2. Crown / Start Furrows. (Judged at plot)

A throwback in top class
A very good and smooth transition from the first furrow to the other 8 furrows.
Small mistakes from this start end reduce the score a little.
All furrows have the same height.
Good weed control (except from the start mistake)



The first furrow is too wide and too high compared with the rest 8 furrows – big mistake.
Some problem with weed control
The first furrow is probably turned further over than the cut of the opening furrow.



Guideline for reversible ploughing

2. Crown / Start Furrows. (*Judged at plot*)

A excellent height and conformity of this stubble Throwback.
A little problem with the Uniformity - the first furrow is a little more shiny compare with the rest.
A excellent throwback with perfect furrow slices.



A excellent throw back with no mistakes.



Guideline for reversible ploughing

2. Crown / Start Furrows. (Judged at plot)

A good grassland throwback.
Excellent weed and seedbed control.
Small small mistake with the uniformity of the furrows.



Tailpiece have been used fair to much
– make the first furrow to look total
difference with the rest. This and the
big and wide 3 furrow make a very
bad transition, uniformity and
conformity.
Soil for seedbed is not good.
A excellent weed control.



Guideline for reversible ploughing

3. a. The Butts. (*Judged at plot*)

- *Only judge at the butts – do not look at the connecting furrow. (only left side of the black line at the under need picture)*
- All soil in the butts must be well ploughed; no dips and no mounds / huge furrows.
- The butts furrows had to be in the same height as the rest of the ploughing.
- Great weight is attached to the regularity.
- Pay attention to: The butts had to be strait into the Connection furrow (no small extra furrow beside the connection furrow)
- All plant material must be ploughed down in the butts (weed control).
- Points must deducted if tractor wheel marks appear in the butts.

Maximum 10 points.



Guideline for reversible ploughing

3. a. The Butts. (*Judged at plot*)

- Only judge at the butts – do not look at the connecting furrow.

The butts is a little low compare to the rest of the ploughing. Except from that this is a excellent ploughing of the Butts, with good conformity and uniformity.

Excellent Weed control
The butts have some dips.
A bigger problem is the little extra furrow there have been ploughed up during the run for connection furrow. This furrow make a bad uniformity, conformity and regularity of the Butts furrows.



Guideline for reversible ploughing

3. a. The Butts. (*Judged at plot*)

- Only judge at the butts – do not look at the connecting furrow.

This stubble Butts is made with a good regularity and well furrows with good seed bed and weed control. A small problem is the uniformity of the furrows – see the arrows (small – big)



The Butts furrows is not well turned and not uniform in the last 1-2 meters to the connecting furrow. That gives problems with weed control and firmness of furrows. The heights is ok and a good regularity.



© Ken Chappell

Guideline for reversible ploughing

3. a. The Butts. (*Judged at plot*)

- Only judge at the butts – do not look at the connecting furrow.

Small mistakes in this end, where the first furrow at butts is a little high and not conform to the rest. Except from that it look like a well made butts ploughing.



Excellent butts with a good regularity, seed bed, weed control. This butts is strait into the connecting furrow with a excellent uniformity and conformity.



Guideline for reversible ploughing

3. b. Connecting Furrow at Butts. (*Judged at plot*)

- *Only judge at the Connecting furrow – do not look at the butts. (only right side of the black line at the under need picture)*
- *The connecting furrow is the first furrow in the finish, there clearly can be seen from headland to headland. If the first furrow is not clearly visible from headland to headland it is not the connecting furrow and therefore belongs to the butts and had to be judge as butts.*
- The connecting furrow must be clearly visible, uniform, and well marked throughout its full length.
- Attention to the edge (against the butts) of the first furrow, it had to be clearly marked and tranquil in a strait line.
- The first furrow must be of the same height and width as the other furrows, with a good uniformity and conformity to the rest of the ploughing.
- The transition from the connecting furrow to the rest of the finishing furrows must be even and all the furrows in the finish must be uniform throughout their full length and conform with each other.
- Points must deducted if tractor wheel marks appear in the connecting furrow.

Maximum 10 points.



Guideline for reversible ploughing

3. b. Connecting Furrow at Butts. (*Judged at plot*)

- Only judge at the Connecting furrow – do not look at the butts.

In this end there is small mistake in the uniformity of the connecting furrow. The rest of the way is there a very good furrow – very similar to the rest of the ploughing.

An excellent connecting furrow. Good edge of the connection furrow. Tranquillity, uniformity, conformity and height is perfect.



Guideline for reversible ploughing

3. b. Connecting Furrow at Butts. (*Judged at plot*)

- Only judge at the Connecting furrow – do not look at the butts.

This connecting furrow is not very uniform and conform to the rest of the finish.
The first furrow is too narrow and the right side of this furrow could wish to be in a more straight and marked line
The height is okay.



This connecting furrow has a pure uniformity from this end to the other end, it is small and wide and not tranquil in a straight line.
The connecting furrow has a okay weed control - maybe a little height



Guideline for reversible ploughing

3. b. Connecting Furrow at Butts. (*Judged at plot*)

- Only judge at the Connecting furrow – do not look at the butts.

This connecting furrow is a little to low and that make some dips. Except from that it is a tranquil furrow with a okay uniformity and conformity.

(Do not look at straightness here)

A very good and excellent connecting furrow. The right side of the first furrow could maybe have been a little better in a tranquil line. BUT the first furrow is very similar to the rest of the finish and make this connecting furrow in the top class.



Guideline for reversible ploughing

4. Weed Control

(Judged at plot)

No weeds, stubble or grass visible.

Evaluate all the cast-off ploughing from the neighbours crown and to the end of the butts. Do not evaluate the connecting furrows and all the finish furrows.

*The first 2 meters in each end of the plot must **not** be evaluated - will be done under "Ins and Outs"*

Skimmers must be used.

- All plant material must be completely ploughed down.
- All roots must be torn or cut through.
- Loose stubble, grass or straw falling or blown up on top of the furrow slices is not so serious a fault as plant material with roots not ploughed down. It is a fault, though, and must result in point deduction. Maximum 10 points.



Guideline for reversible ploughing

4. Weed Control (*Judged at plot*)

No weeds, stubble or grass visible.

This is a excellent weed control.
No grass or stubble is visible anywhere



Compare with this un-level plot the ploughman have very good weed control.
The little green spot (yellow arrow) will be judged buy the team there judge The butts.



Guideline for reversible ploughing

4. Weed Control (*Judged at plot*)

No weeds, stubble or grass visible.

A good Weed Control.
The spot to the left belongs to the Connecting
Furrow at Butts.



A bad weed control
But be carefully the bottom part of the
picture is not the ploughman's mistake but
a spot with Couch Grass roots.



Guideline for reversible ploughing

4. Weed Control (*Judged at plot*)

No weeds, stubble or grass visible.

The first 2 meter will be judge in the “ins and outs”
So here is the main part of the problem an “ins and outs” problem



Guideline for reversible ploughing

5. Firmness of furrows (*Judged at plot*)

Close and firm furrows, no holes.

*Evaluate all the cast-off ploughing from the neighbours crown and to the end of the butts. Do **not** evaluate the connecting furrows, all the finish furrows and the first 2 runs against the neighbour. The first 2 meters in each end of the plot must **not** be evaluated - will be done under "Ins and Outs"*

- The furrows must be well turned and lie firm and close against each other with no holes in between.
- Each furrow must lie constant and tranquil with no holes and cracks.
- Furrows must be packed as good as possible and be firm to walk on.
- Tractor wheel marks anywhere on the ploughed land must result in point deduction.

Maximum 10 points.

It must be controlled that the ploughman has not been driving on the neighbouring plot and that his first furrows against the neighbouring plot are ploughed through. In case of faults the judges must inform the Head Stewards.



Guideline for reversible ploughing

5. Firmness of furrows (*Judged at plot*)

Close and firm furrows, no holes.

Note: We can't feel the furrow packing by looking at the picture and this is a big part of this judging.

**This furrow slices is with some cracks and there is a single gab between the furrows.
Not to bad but not perfect.**



**Excellent Firmness of furrows at this plot.
At the picture it look like there is no mistakes at all.**



© Ken Chappell

Guideline for reversible ploughing

5. Firmness of furrows (*Judged at plot*)

Close and firm furrows, no holes.

Note: We can't feel the furrow packing by looking at the picture and this is a big part of this judging.

A stubble field like this, is often with out any holes and therefore will the judging be more with attention to the packing – “how to walk on”.



Look like this plot have a okay Firmness of furrows. Maybe small mistakes around the un-level spots.



Guideline for reversible ploughing

6. Soil for seedbed

(Judged at plot)

Soil made available for future seedbed.

*Evaluate all the cast-off ploughing from the neighbours crown and to the end of the butts. Do **not** evaluate the connecting furrows, all the finish furrows and the first 2 runs against the neighbour.*

*The first 2 meters in each end of the plot must **not** be evaluated - will be done under "Ins and Outs"*

- The furrow slices must not stand on edge but should be well turned, leaving plenty of soil available for the future cultivation.
- The furrows can also be to flat, because the cultivator can lift up the thin furrow slides.
- You must be able to prepare the following seed bed with a harrow without lifting plant material upon the surface.

Maximum 10 points.



Guideline for reversible ploughing

6. Soil for seedbed (*Judged at plot*)

Soil made available for future seedbed.

With this flat furrows there is not so much soil for seedbed.

If you want to cultivate there is a risk of to pull up some grass turf or even roll the furrow slices around.

(Do not pay attention to the weed control in this aspect)



Here is there plenty of soil for seedbed.
A rounded furrow slices create more available soil for future cultivating.



Guideline for reversible ploughing

6. Soil for seedbed (*Judged at plot*)

Soil made available for future seedbed.

Good soil for seedbed here
A little more rounded furrow slices
could changes it to excellent.



Lumpy and un-level furrows make it to be an half bad Soil for seedbed



Guideline for reversible ploughing

7. Uniformity of furrows. (Judged from headland)

Uniform, conforming furrows, no visible pairing.

*Evaluate all the cast-off ploughing from the neighbours crown and to the end of the butts. Do **not** evaluate the connecting furrows, all the finish furrows and the first 2 runs against the neighbour.*

*The first 2 meters in each end of the plot must **not** be evaluated - will be done under "Ins and Outs"*

- The furrows must be of equal height/depth and equal width throughout the full length and full width of the plot.
 - All furrows in the plot should be uniform and conform with each other.
 - No repeating faults for each run, no pairing.
- Maximum 10 points.



Guideline for reversible ploughing

7. Uniformity of furrows. (*Judged from headland*)

Uniform, conforming furrows, no visible pairing.

Especially from this end, but also the whole way, the width of the furrows varies quit a lot, with a bad uniformity and conformity as result. Remember do NOT look at straightness and the 2 meters Ins and Outs



Bad uniformity and conformity of furrows – especially from this end.

As Judge you had to look from the headland where you are asked to look from – and judge what you can see. The team at the other Headland - maybe see something else and give score after that.



Guideline for reversible ploughing

7. Uniformity of furrows.

(Judged from headland)

Uniform, conforming furrows, no visible pairing.

This plot is almost perfect.
Same style of ploughing all the way.
But there is very small mistakes - each fourth furrow is a little difference (wider) from the rest.



The wide and the height of the furrows look okay, but there are 3 other mistakes:

1. In the cast off - every fourth furrow looks different.
2. It is like the style/ type change from the cast off furrows to the Butts furrows.
3. In the butts there is again "fourth furrow" mistake – but difference from the pk.1



Guideline for reversible ploughing

8. Finish furrows. (*Judged at plot*)

Uniformity and conformity of furrows, weed control.

The Finish furrows is all the furrows in the finish from the Connecting furrow at butts to the last furrow (both included) (Between the yellow lines at the picture.)

- The furrows must be of equal height and equal width throughout the full length and full width of the finish plot.
- The final furrow must be at the same height as the crown furrows. There must be an even transition to the final furrow.
- Weed control - all plant material must be completely ploughed down.

Maximum 10 points.

Control if the amount of furrow slices in the finish is correct: 10 x count of furrows on the plough or 10 x count of furrows on the plough minus 1. (f.e. 2-furrow plough: 20 or 19 furrow slices) If not report to Head Stewards.



Guideline for reversible ploughing

8. Finish furrows. (*Judged at plot*)

Uniformity and conformity of furrows, weed control.

At the picture there is a fine weed control.
There is big mistakes in the uniformity and conformity of the finish furrows – the last run big furrows – the second last run small furrows etc.

The height is Okay.

(Do not look at straightness)

(Do not look at the first 2 meters – they will be judge under “ins and outs”)



Very good finish furrows.

But there is small mistakes – there is few furrows there is looking just a little difference from the rest (yellow arrow) (maybe only from this end but we are looking from this end and had to judge what we can see)

Weed control fine.

There is a excellent transition all the way from connection furrow to the final furrow.



Guideline for reversible ploughing

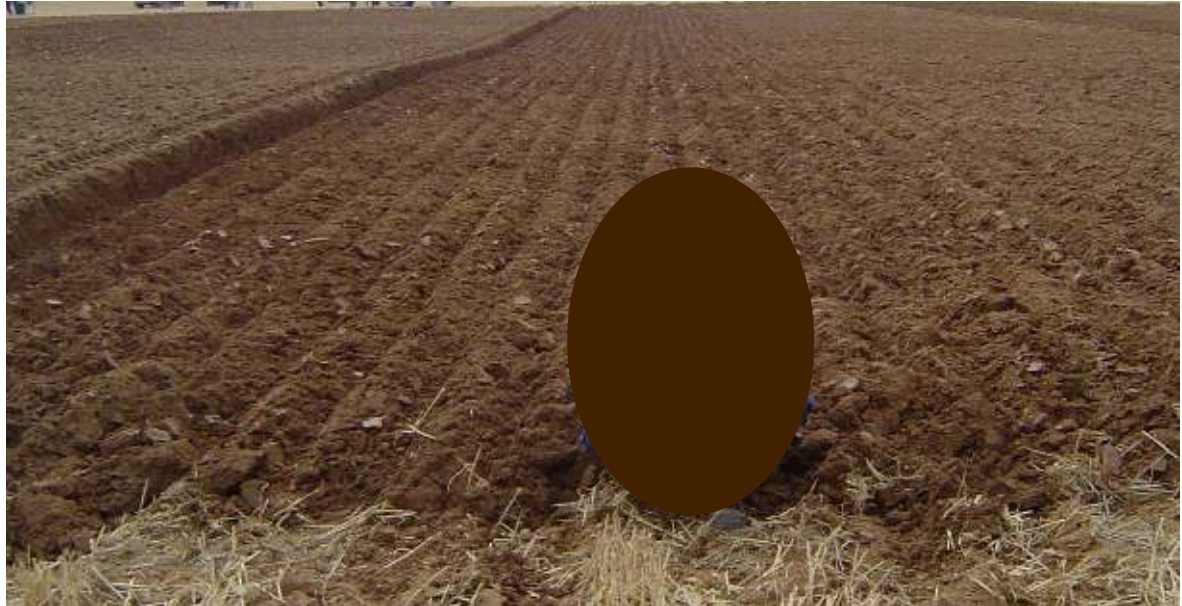
8. Finish furrows. (*Judged at plot*)

Uniformity and conformity of furrows, weed control.

Good uniformity and conformity of this finish furrows – mistakes in the last 2 runs – where there is a little pairing.

At the picture the final furrows look a little low.

Good weed control.



The connecting furrow look difference from the rest of this finish furrows and the last furrow look bumpy and difference.

There is also mistakes in the right corner – okay it look like there have been a old finish furrow – Do not compensate for that, unless the Head Steward have given information about to ignored that part.
(don't look at straightness)



Guideline for reversible ploughing

9. Final Furrow. (*Judged from headland and plot*)

Position, neatness, narrowness, shallowness and height

- The last 2 or 3 furrows should be of the same height as the furrows in the throwback.
- The finishing furrow should be as narrow as possible and in normal ploughing depth.
- Weed control in the final furrow - no loose soil or plant material in the bottom of the final furrow.
- The tractor wheel mark had to be in a natural level.
- The position “disc coulter in disc coulter” must be controlled. The disc coulter for the last furrow must cut where the disc coulter from the opening furrow did cut. Other words there must not be any unploughed land left or any re-ploughed land. The judge must carefully control that by inspect the cut side of the final furrow:
Unploughed land = no mark from the bottom of the opening furrow
Correct or re-ploughed land = there is a mark from the bottom of the opening furrow.

Maximum 10 points

- Only one tractor wheel mark in the ploughed land. Small marks from the tractor front wheel, not very visible from the headland, should **not** be considered a fault. And plough wheel mark should be within the tractor wheelmark. As well control for wheelmarks in the crown / start furrow area from the second last run. ***If there is wheelmark mistake in the finish, the judges must inform the Head Stewards and still judge the finish as there is no mistake (Head Steward will penalize).***

Unploughed land – the bottom of the opening furrow is not visible here.



Here is there some marks in the soil there shows the bottom of the opening furrow. – so correct placed final furrow (or re-ploughed)

Guideline for reversible ploughing

9. Final Furrow. (*Judged from headland and plot*)

Position, neatness, narrowness, shallowness and height

Unploughed land – It is very clear here



© Ken Chappell

The first furrow in this crown is almost cut to half sides.

The finish is re-ploughed a lot and this first furrow looks fair to small



Guideline for reversible ploughing

9. Final Furrow. (*Judged from headland and plot*)

Position, neatness, narrowness, shallowness and height

From this end there is some unploughed land left. In the middle of the field the cut/ placement of the final furrow looks correct.

Okay clean in the bottom of the furrow – but a little grass from this end.

The width and height of the final furrow looks good but the tractor wheelmark look a little to depth.

The plough wheel is not inside the tractor wheel mark – so there had to be a note to the Head Steward.

This is a excellent final furrow.
No mistakes



© Ken Chappell

Guideline for reversible ploughing

9. Final Furrow. (*Judged from headland and plot*)

Position, neatness, narrowness, shallowness and height

From the picture it look like the “Cut” is placed correct.

But the last furrow slice is very wide and therefore the final furrow is also to wide.

The height looks okay.

Clean furrow bottom but a little tuft of grass this end.

All wheel marks look okay.

A excellent final furrow – but there is some lumps of soil in the bottom of the furrow.

A nice small furrow.

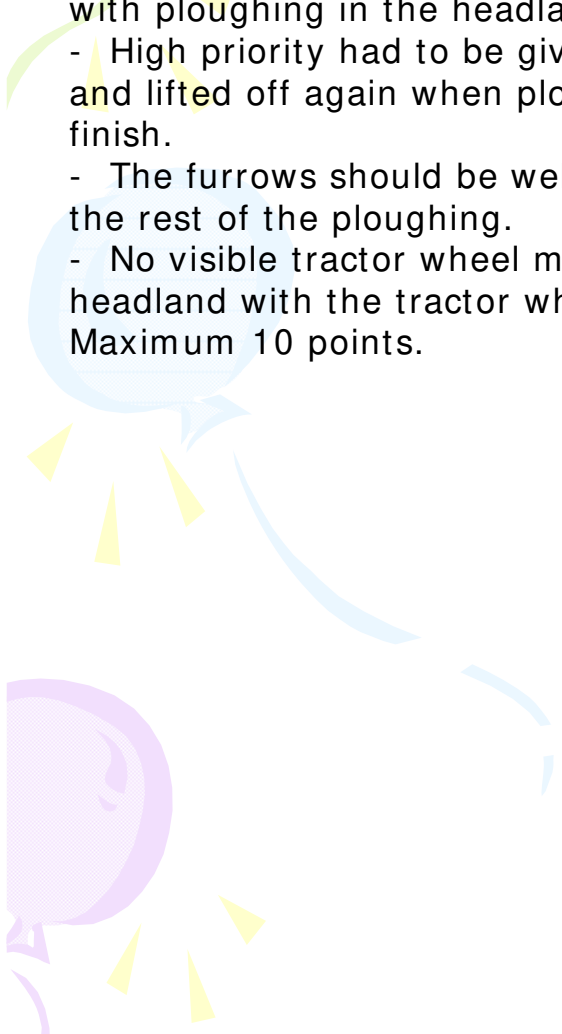





Guideline for reversible ploughing

10. Ins and Outs. (*Judged from headland*)

The first and last 2 meters of the ploughed land had to be evaluated as part of this discipline.

- The very most important is that all land within the scratch mark has been cut through and is well turned. It is a must bigger mistake to have some unploughed land inside the scratch mark compare with ploughing in the headland.
 - High priority had to be given to regularity in the way the plough has been positioned into the soil and lifted off again when ploughing all the furrows, in the crown, in the general work, and in the finish.
 - The furrows should be well turned - all the way to the scratch mark and in the same style as in the rest of the ploughing.
 - No visible tractor wheel marks within 2 meters from the scratch mark line and no rolling of the headland with the tractor wheels.
- Maximum 10 points.
- 
- 

Guideline for reversible ploughing

10. Ins and Outs. (*Judged from headland*)

This is a well done Ins and Outs for a reversible ploughman.
Good weed control and good uniformity all the way to the ends.
A good regularity.
There are small mistakes but anyway in the top class.



Not a well done Ins and Outs.
Bad uniformity and conformity of this ends.
The weed control looks ok at the picture.
The regularity is average.



Guideline for reversible ploughing

10. Ins and Outs. (*Judged from headland*)

It is not a good Ins and Outs.
Bad uniformity and weed control.
Okay Seed bed.



Well ploughed furrows to the ends
But at big problem is, there is no
regularity in the thickness of the
furrows to the ends.
Good seed bed and weed control.



Guideline for reversible ploughing

11. Straightness. (*Judged from headland*)

The straightness had to be judged in full length (also the 2m ins and outs).

11a. Straightness in the Opening Split.

Maximum 10 points.

11b. Straightness in Crown.

evaluation should be done on the top off the furrow slices and not on the disc cut edge of the furrow!

All the Crown furrows (8 furrows(9 for 3 furrows)) had to be evaluated.

Maximum 10 points.

11c. Straightness in General Work.

evaluation should be done on the top off the furrow slices and not on the disc cut edge of the furrow!

Evaluate the all the cast-off ploughing from the neighbours crown and to the end of the butts. Do not evaluate the connecting furrows and all the finish furrows.

Note: Do not judge the first 2 runs against the neighbour ploughman - it is for straighten up.

Maximum 10 points.

11d. Straightness in Finish.

All furrows in the finish, including connecting furrow, finish furrows and the final furrow, must be evaluated, with excessive weight on the final furrow.

Maximum 10 points.

In total (40 point / 2) = maximum 20 point

Guideline for reversible ploughing

11. Straightness. (*Judged from headland*)

The straightness had to be judged in full length (also the 2m ins and outs).

11a. Straightness in the Opening Split.

Maximum 10 points.



Guideline for reversible ploughing

11. Straightness. (*Judged from headland*)

The straightness had to be judged in full length (also the 2m ins and outs).

11b. Straightness in Crown.

evaluation should be done on the top off the furrow slices and not on the disc cut edge of the furrow!

All the Crown furrows (8 furrows(9 for 3 furrows)) had to be evaluated.

Maximum 10 points.

All this 8 furrows had to be look at for straightness in Crown



Guideline for reversible ploughing

11. Straightness. (*Judged from headland*)

The straightness had to be judged in full length (also the 2m ins and outs).

11c. Straightness in General Work.

evaluation should be done on the top off the furrow slices and not on the disc cut edge of the furrow!

Evaluate all the cast-off ploughing from the neighbours crown and to the end of the butts. Do not evaluate the connecting furrows and all the finish furrows.

Note: Do not judge the first 2 runs against the neighbour ploughman - it is for straighten up. Maximum 10 points.



All the furrows between the yellow lines had to be evaluated in straightness in General Work.

Green lines is the 2 runs for straighten up – and therefore no evaluating.

Guideline for reversible ploughing

11. Straightness. (*Judged from headland*)

The straightness had to be judged in full length (also the 2m ins and outs).

11d. Straightness in Finish.

All furrows in the finish, including connecting furrow, finish furrows and the final furrow, must be evaluated, with excessive weight on the final furrow.

Maximum 10 points.

All the furrows between the yellow lines had to be evaluated in straightness in the Finish



Guideline for reversible ploughing

12. General Appearance. (*Judged from headland*)

The ploughman must have finished his plot completely.

The skill of the ploughman is evaluated by judging at all visible aspects as observed from headland.

Here is it important to look at all aspects from crown to finish.

- Important: Same style off ploughing with out any mistakes, with uniform and conform furrow slices the hole way from the Crown furrows – Finish furrows – The Butts and the Cast off.
Control of all aspects like: Crown, the butts, finish, weed control, uniformity of furrows, straightness, ins and outs.
Maximum 10 points.



Guideline for reversible ploughing

12. General Appearance. (*Judged from headland*)

This plot is general well done.

The crown furrows (to the right) is maybe in a little difference style from the rest of the ploughing.

Other small mistakes like final furrow not clean + mistakes in this end of last run.

Connecting furrow could be a little better marked.



Guideline for reversible ploughing

12. General Appearance. (*Judged from headland*)

This is a excellent uniformity and conformity of all the furrows across this ploughman's plot – same style all the way.
There is only very small mistakes like Ins and Outs can be better and few unlike furrows in the Finish.

